



Simple Set-up for SpeedTouch 546 Multi-user ADSL Gateway.

Step 1 - Unpack and connect SpeedTouch 546 Unit to Power, ADSL line and PC.

Step 2 - Establish connection between SpeedTouch 546 and your PC using Ethernet connection.

Step 3 - Run set-up wizard on SpeedTouch 546 to configure and establish ADSL internet connection

Step1 - Unpack and connect SpeedTouch 546 Unit.

The cables supplied with your SpeedTouch 546 are colour-coded.

The power-pack (BLACK) connects to the 15VAC socket next to the push-button power switch on the SpeedTouch 546 rear panel.

The YELLOW cable is for an Ethernet connection. Connect one end to any of the 4 available ports on the rear of the SpeedTouch 546 and the other end to the ethernet port on your PC

Every telephone device (except the SpeedTouch 546) connected to an ADSL-enabled telephone line must use an in-line filter to prevent the ADSL signal from being corrupted and possibly causing damage to that device. (eg Telephone, Fax or analogue modem).

There are 2 basic types of in-line ADSL filter available (not supplied with the SpeedTouch 546)

A Type 'A' filter plugs into the wall socket and provides both a filtered socket for a telephone device and a non-filtered DSL socket for connection to your SpeedTouch 546.

A Type 'B' filter plugs into the wall socket and provides a single filtered connection for a telephone device only.

Accordingly, there are two telephone line cords (GREY) supplied for use with the two filter types: The RJ-11 cable has a clear plastic (RJ-11) plug on both ends.

The BT cable has a white (BT) plug on one end and a clear plastic (RJ-11) plug on the other end.

Use the RJ-11 cable to connect the 'DSL' socket on the rear of the SpeedTouch 546 to the DSL outlet of your type 'A' in-line filter

Use the BT cable to connect the 'DSL' socket on the rear of the SpeedTouch 546 directly to the telephone wall socket.

Type 'B' filters are to be used on all other connected telephone devices. Simply plug in-line with each device.

Step2 - Establish connection between the Speedtouch 546 and your PC

With the YELLOW Ethernet cable connected as described above, power-up your SpeedTouch 546 and your PC.

The DHCP server running in the SpeedTouch 546 will assign an IP address to the PC's ethernet interface.

On your PC, open your Internet Browser (eg Windows Internet Explorer) and enter the default address of the SpeedTouch 546 in the Address Bar: 10.0.0.138

The front screen of the SpeedTouch 546 will appear, with the Setup Wizard opening on top.

If the Setup Wizard does not appear, your browser has blocked the Pop-Up.

Allow the Pop-Up by clicking on the Pop-Up Alert Bar and proceed to Step 3 below to configure the ADSL connection

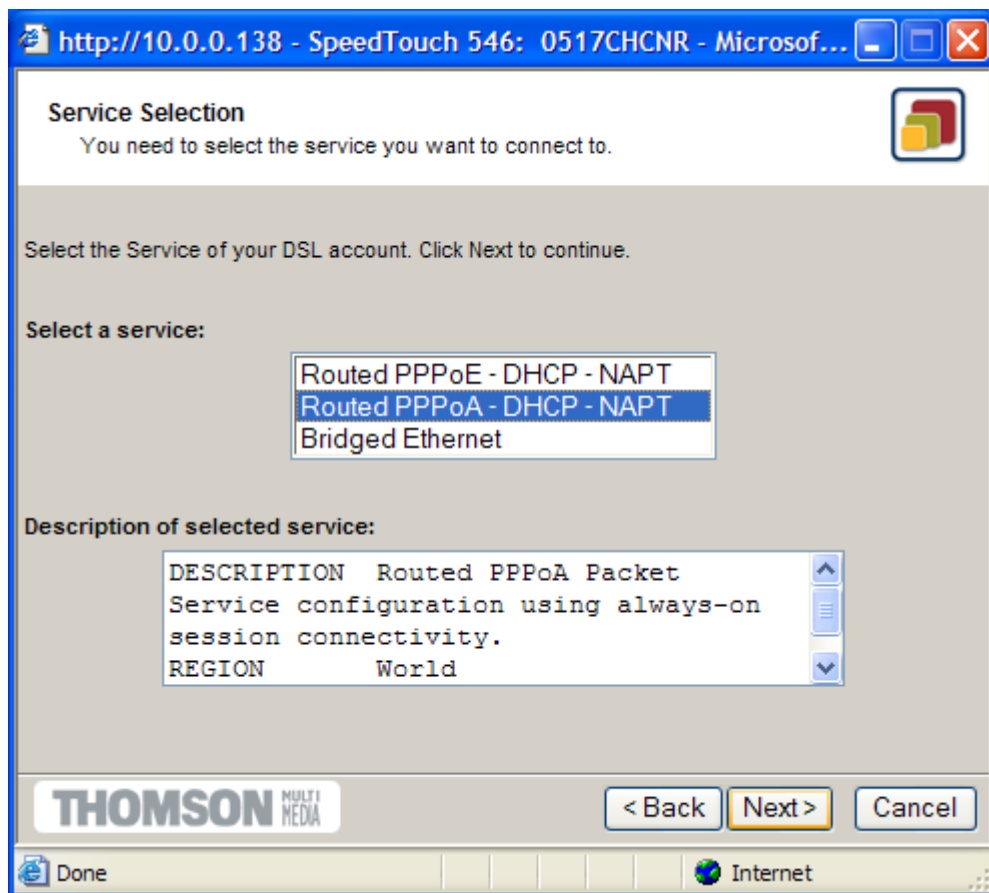
Step 3 - Run set-up wizard on SpeedTouch 546 to configure and establish ADSL connection

When you have successfully completed the first two steps above, you will be looking at this Set-up wizard, which is running on the SpeedTouch 546:

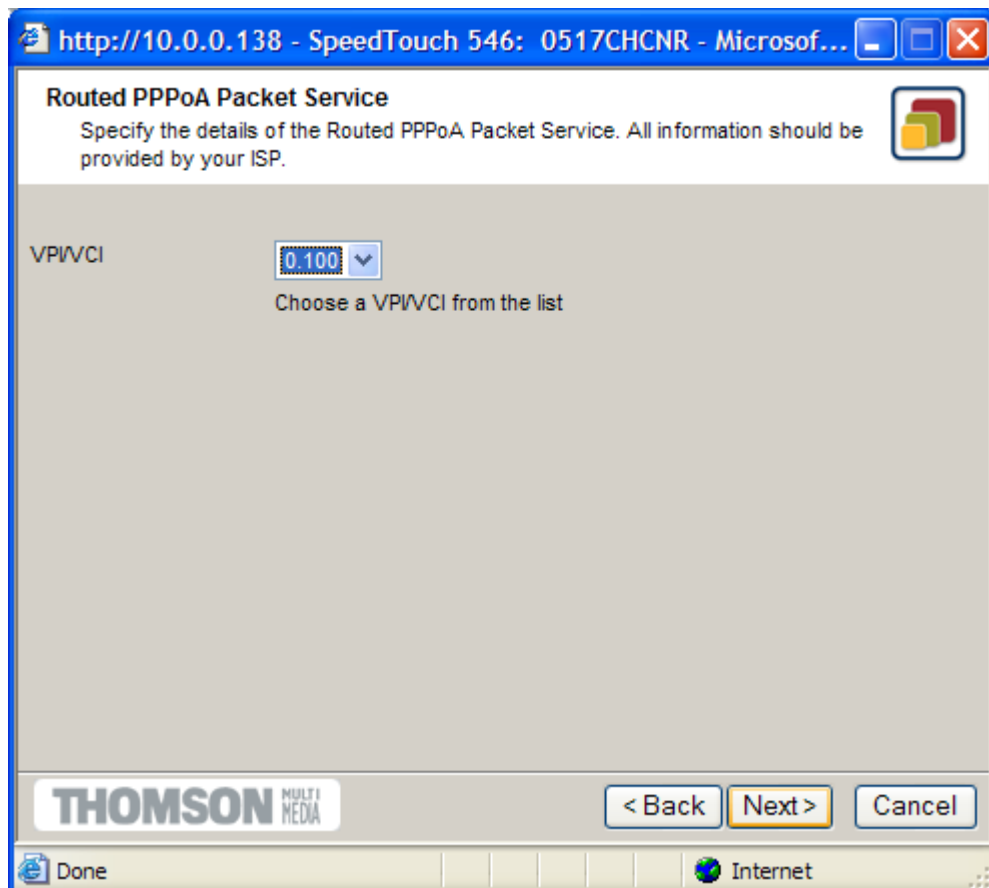


Click 'Next>'

On the following screen select 'Routed PPPoA – DHCP – NAPT' then click 'Next>'



On the following screen select '0,100' from the drop-down list and click 'Next>'



On the next screen enter the *username* and *password* provided by your Internet Service Provider (ISP) then click 'Next>'

http://10.0.0.138 - SpeedTouch 546: 0517CHCNR - Microsof...

PPP Account Settings

Specify the details of the Routed PPP Account. All information should be provided by your ISP.

User Name:
Enter your Internet connection user name.

Password:
Enter your Internet connection password.

THOMSON MULTI MEDIA

< Back Next > Cancel

Done Internet

The following screen asks for a security user name and password to protect the settings you have made on your SpeedTouch 546.

You must enter a user name, but the password is optional. You can make these settings anything you like, but be aware that both the username and password are CASE SENSITIVE. We recommend you note them both down in your Quick Installation Guide for future reference. If forgotten, you will need to clear all settings to their defaults (see section 5.2 of the Full User Guide on the supplied CD-ROM) and start again from the beginning!

When done click 'Next>'

http://10.0.0.138 - SpeedTouch 546: 0517CHCNR - Microsof...

SpeedTouch Security

Specify user name and password to protect SpeedTouch administrative access.

User Name:
Enter user name.

Password:
Enter your password.

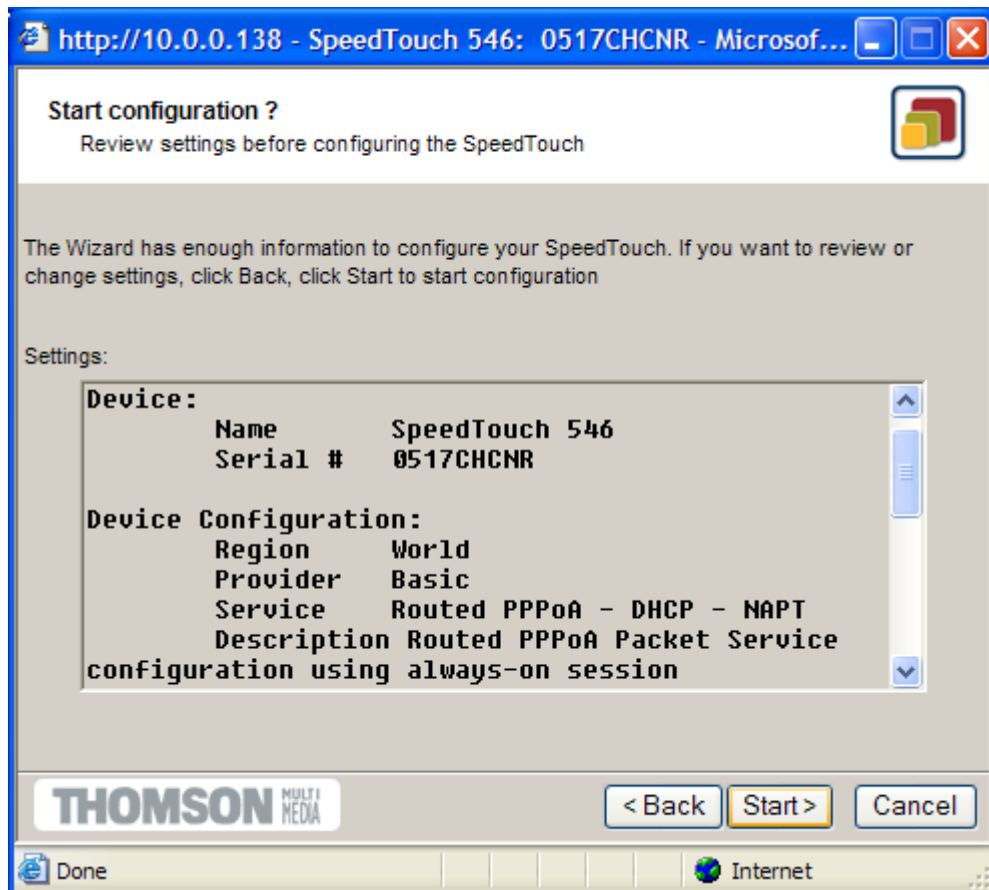
Confirm Password:
Re-enter your password.

THOMSON MULTI MEDIA

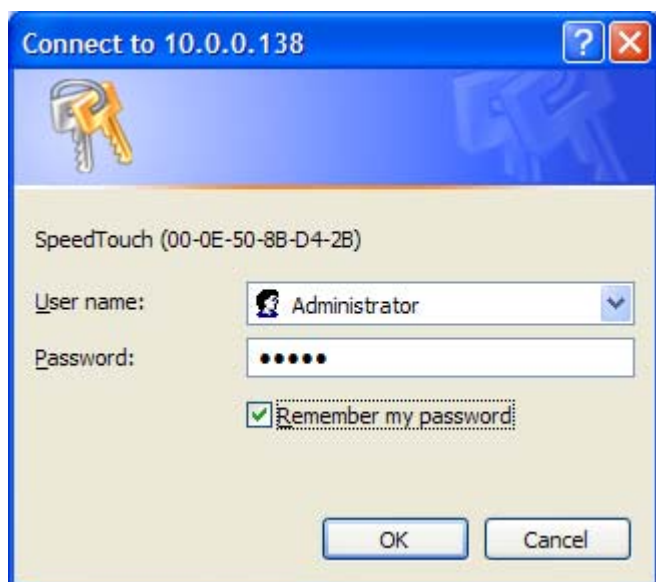
< Back Next > Cancel

Done Internet

The following screen displays a confirmation of all the settings entered into the Setup Wizard. Check all settings (using 'Back<' if necessary to correct) and then click 'Start>'



Because the SpeedTouch 546 is saving your settings, it will ask for a confirmation of the Security username and password you have entered above:



If you would like your PC to remember the Security username and password, tick the 'Remember my password' check-box. Click 'OK'

The following screen is then displayed. Click 'Finish'



The SpeedTouch 546 saves all settings, does a re-start and connects to your ISP via ADSL, using the stored ISP username and password. The DSL LED is lit solid when this connection is successful.

You are now connected to the Internet!

For AtlasGentech Limited Help-Desk Support Please telephone (09) 574-2719 between the hours of 8:30am and 5:00 pm Monday – Friday.

For driver download and firmware update visit: www.speedtouchnz.co.nz
or: www.speedtouch.com